



# Bannockburn GC

MASTER PLAN 2021

# Introduction

## ▶ Course Development Working Group

- Dick Van Den Bosch (Course Development Working Group)
- Max McLaren (Course Development Working Group)
- Bryan Harmon (Course Development Working Group)
- Rob Price (Course Development Working Group)
- Mick Brown (Course Development Working Group)
- Guenter Moosebrugger (Course Development Working Group)
  
- Peter Frewin (Agronomy Consultant)
  
- Paul Reeves (Golf Course Designer – Pacific Coast Design)

## ▶ Objectives

- ▶ Embrace the conclusions of the Feasibility Report
  - ▶ Develop 19 new grass greens
  - ▶ Average size 400m<sup>2</sup>
  - ▶ Variety of pin locations
  - ▶ Greens that are fun to play

## ▶ Review the current course routing

## ▶ Limitations

- ▶ Capped budget
- ▶ Work with existing irrigation system
- ▶ Retain if not lengthen course
- ▶ Positive drainage of all greens

# Methodology

- ▶ Site Meeting
  - ▶ Discuss objectives
  - ▶ Walk the course
  - ▶ Discuss ideas of the committee
  - ▶ Discuss ideas of the Course Designer
- ▶ Draft Master Plan – Review
- ▶ Survey Site
- ▶ Finalise Master Plan
- ▶ Finalise Green Designs
  - ▶ Specifications
  - ▶ quantities



# Course Review

▶ Essentially the routing is good.

## ▶ Strengths

- is fundamentally safe
- has no boundary safety issues
- Nice variety of hole lengths
  - 5 x par 3's (M 140m – 207m – W 135 - 187)
  - 11 x par 4's (M 295m – 368m – W 249 - 367)
  - 2 x par 5's (1 for Women) (M 485m – 496m – W 391)
- Difficulty between 9's appears well balanced (M 80 / 91- W 86 / 85)
- Variety of uphill and downhill holes
- Balanced variety left to right and right to left holes
- Easy walking, great green to next tee relationship

## ▶ Weaknesses

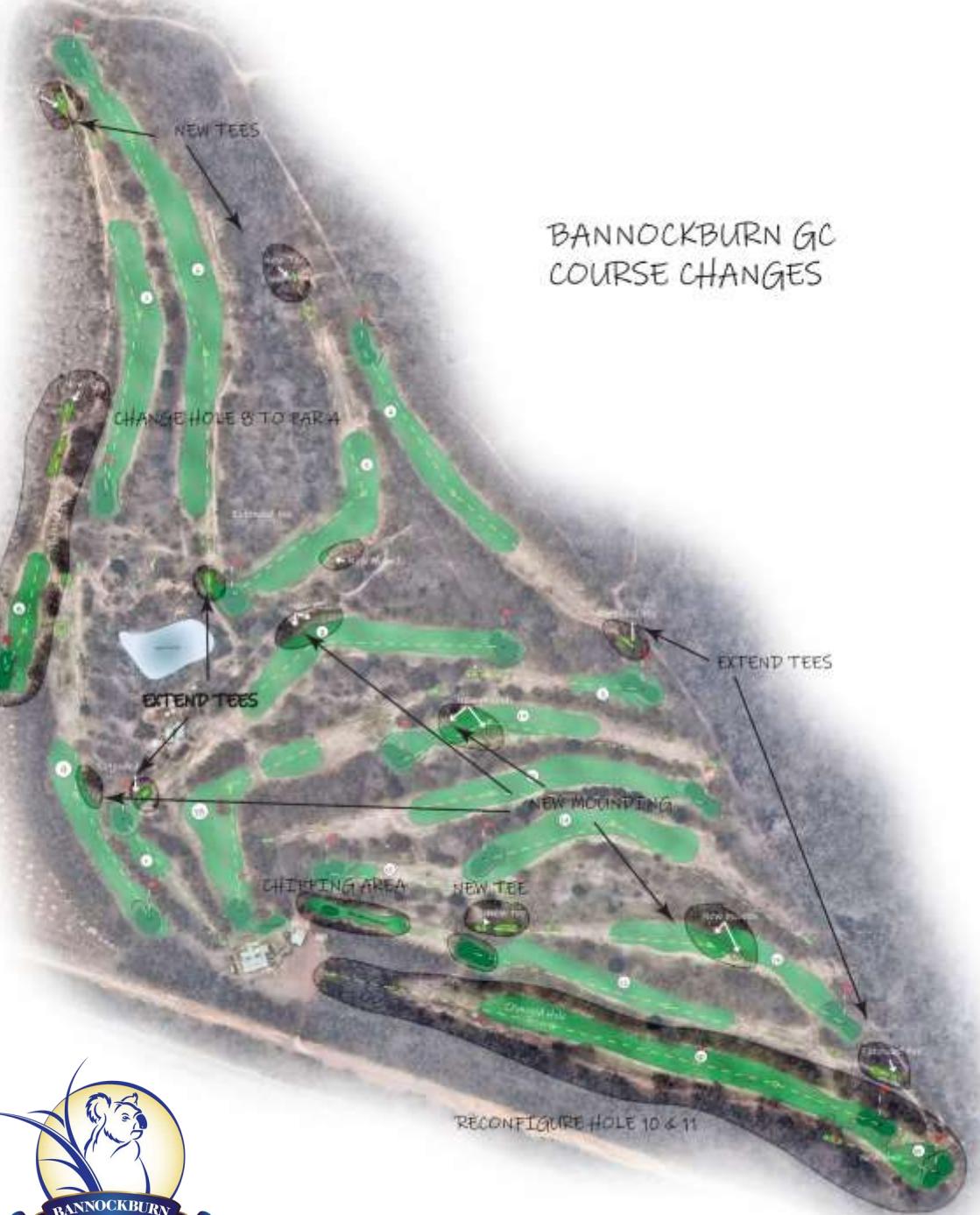
- Perceived as being a short course (5,542m / 4,791m)
- Both 9's commence with a par 3 (more unusual than a weakness)
- Lots of dogleg holes (some bend a bit early)
- Back 9 feels a bit parallel and not as varied as the front 9 holes

## ▶ Opportunities

- Plenty of room available for lengthening or tweaking
- Some nice land shapes, rolls, and grades for incorporating into course features



# Master Plan



BANNOCKBURN GC  
COURSE CHANGES

## ▶ Significant Routing Changes

- ▶ 8<sup>th</sup> hole changes to a Par 4
  - ▶ New tee location
- ▶ 10<sup>th</sup> changed to a par 5
  - ▶ New tee location
- ▶ 11<sup>th</sup> hole changed to a par 3
  - ▶ New tee, green near current 11<sup>th</sup>
- ▶ Green sites moved back
  - ▶ 2<sup>nd</sup>, 12<sup>th</sup>

## ▶ Longer Term Changes

- ▶ Tees changes
  - ▶ 4<sup>th</sup>, 5<sup>th</sup>, 6<sup>th</sup>, 7<sup>th</sup>, 12<sup>th</sup>, 13<sup>th</sup>
- ▶ Additional Mounding
  - ▶ 2<sup>nd</sup>, 5<sup>th</sup>, 9<sup>th</sup>, 13<sup>th</sup>, 17<sup>th</sup>, 18<sup>th</sup>



# Master Plan





# Scorecards

Hole	Par	Men	Women	Hole	Par	Men	Women
1	3	140	138	10	5	496	429
2	4	372	330	11	3	104	95
3	3	148	135	12	4	375	290
4	4	366	276	13	4	358	313
5	4	374	315	14	4	326	321
6	5	491	450	15	3	167	156
7	4	386	336	16	4	383	367
8	4	304	227	17	4	295	295
9	4	335	288	18	4	335	269
	35	2916	2495		35	2839	2449
						5755	4944

Proposed Scorecards – Distances are approximate and need to be field verified

# Designing Bannockburn GC



Basic Routing



Conceptual Hole Design



Conceptual Green Design



Detailed Design



# Bunkerless Holes





# Obstacles

A swale is a long shallow valley designed to both carry water away from an area and act as an obstacle, either deflecting or catching balls



Swale

Tee

Hollow

Hollows at Bannockburn would drain freely and not be contained on all sides, they act a little like bunkers filled with grass and challenge the golfer with both avoidance and recovery shots



Mound

Mounds are the only convex obstacle in golf, usually they deflect the ball but can be maintained to hold balls and create difficult sloping lies.



Green

Hole Number and Playline

17

Bank

Banks are grassy slopes steep enough to not hold a golf ball, they act as an obstacle that both deflects and repels balls and challenge golfers with a variety of recovery shot options.







# The Vision

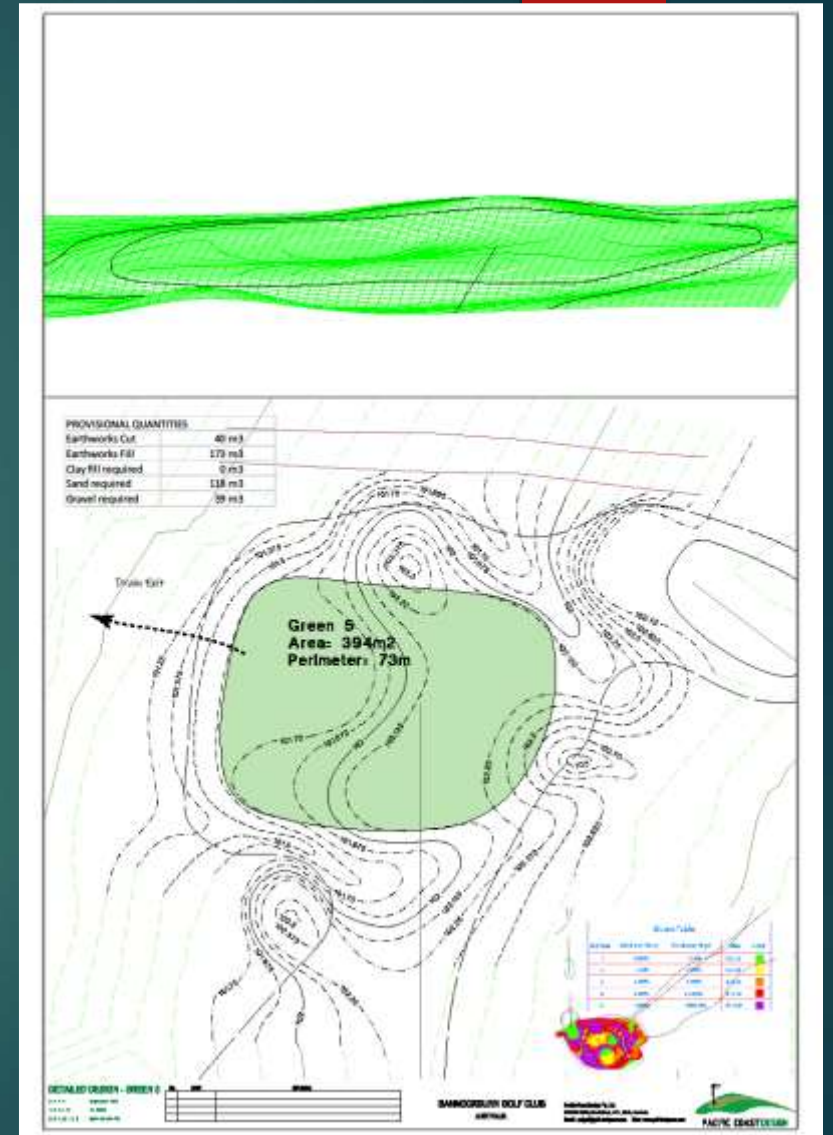
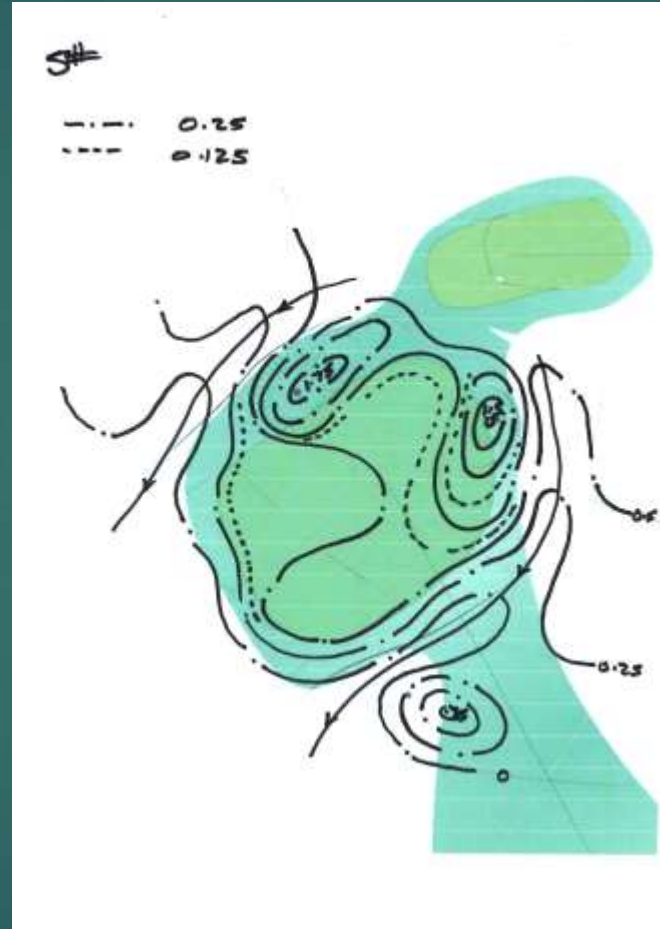




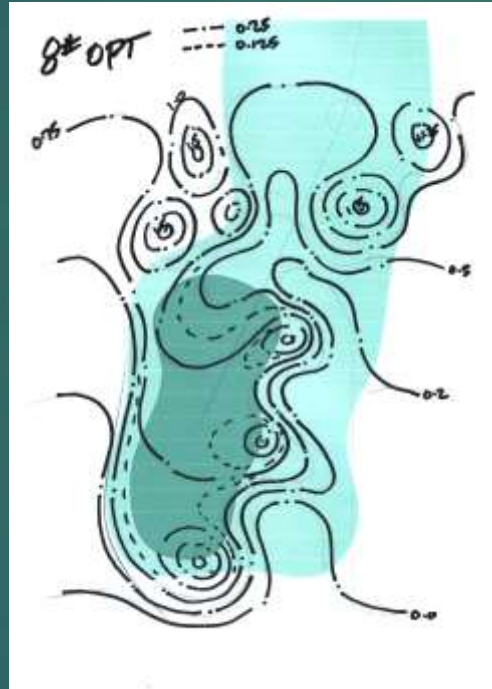
# Hole Descriptions



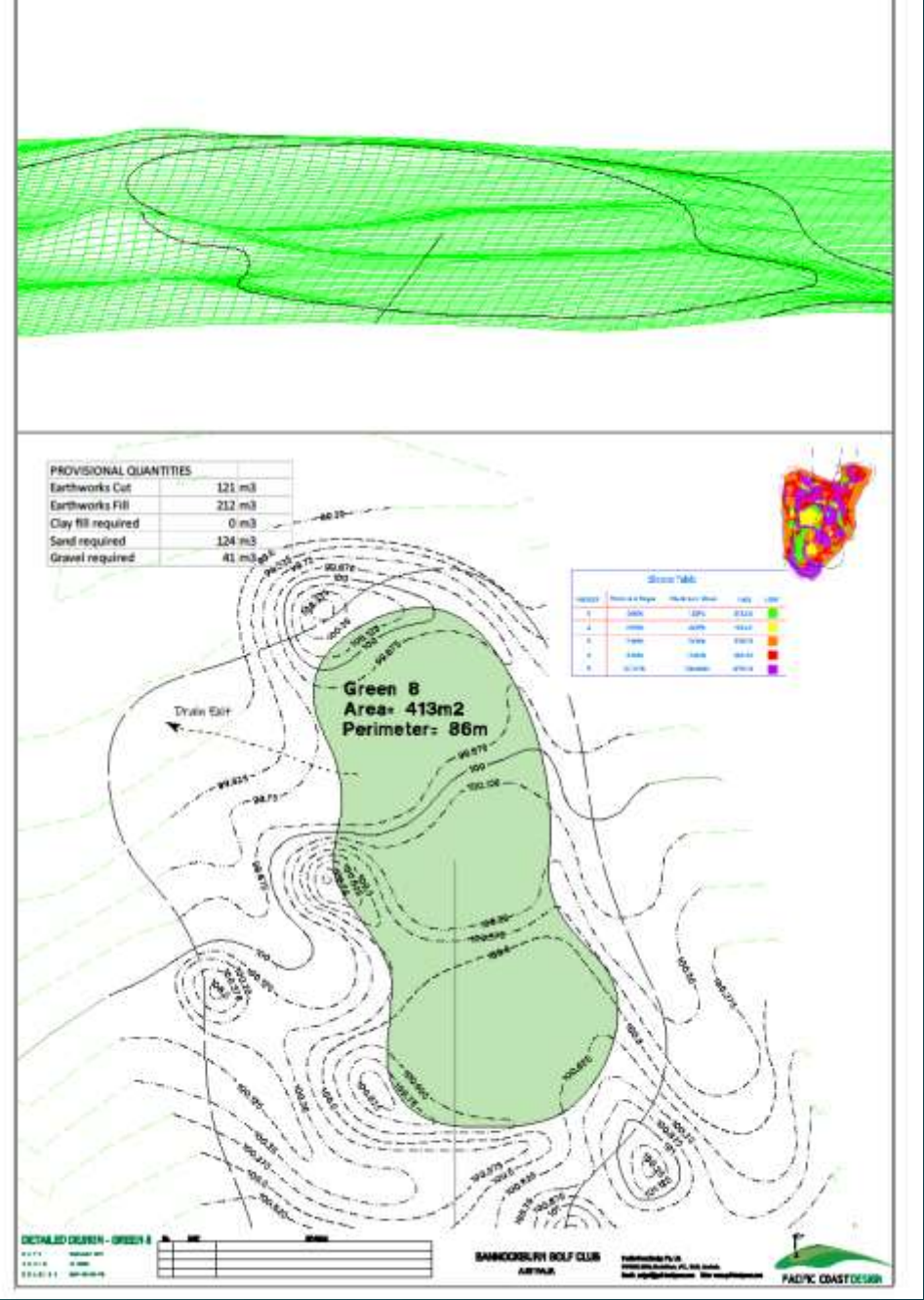
Conceptual work



# Hole Descriptions

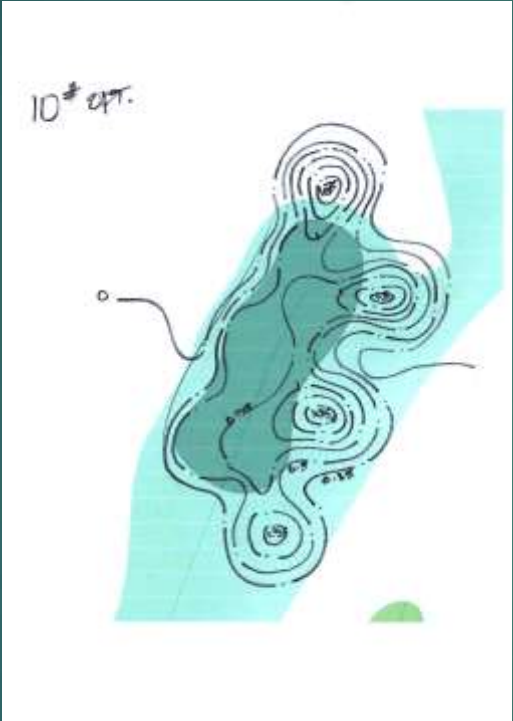


Conceptual work

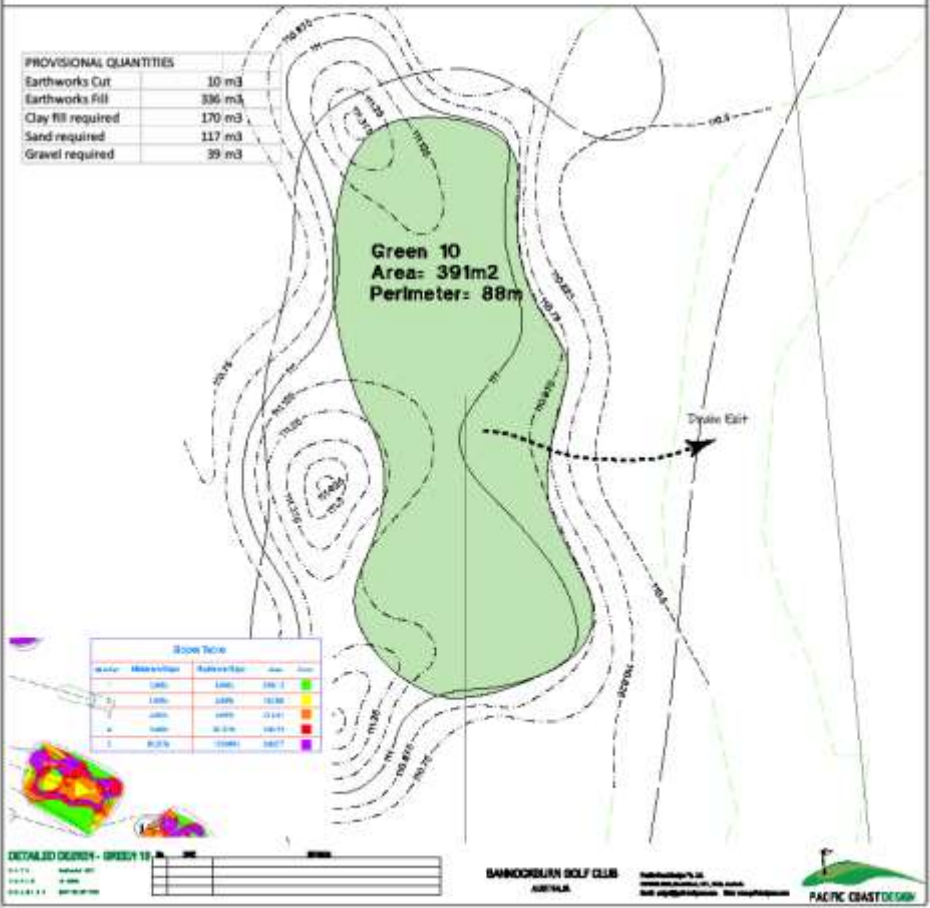
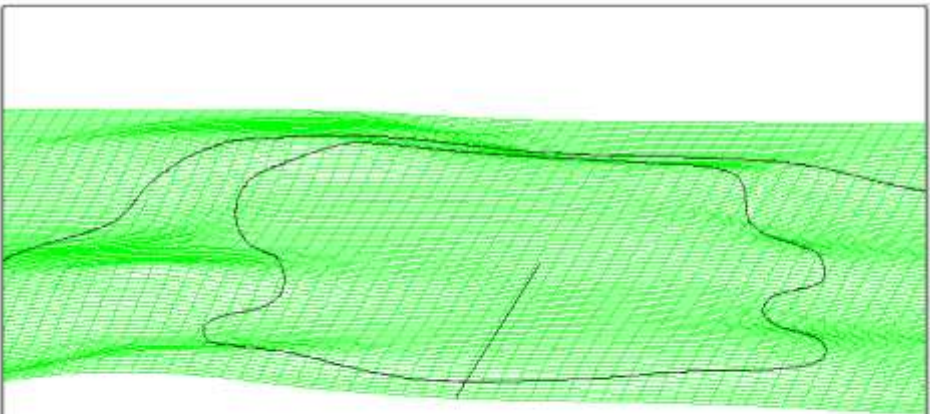




# Hole Descriptions



Conceptual work

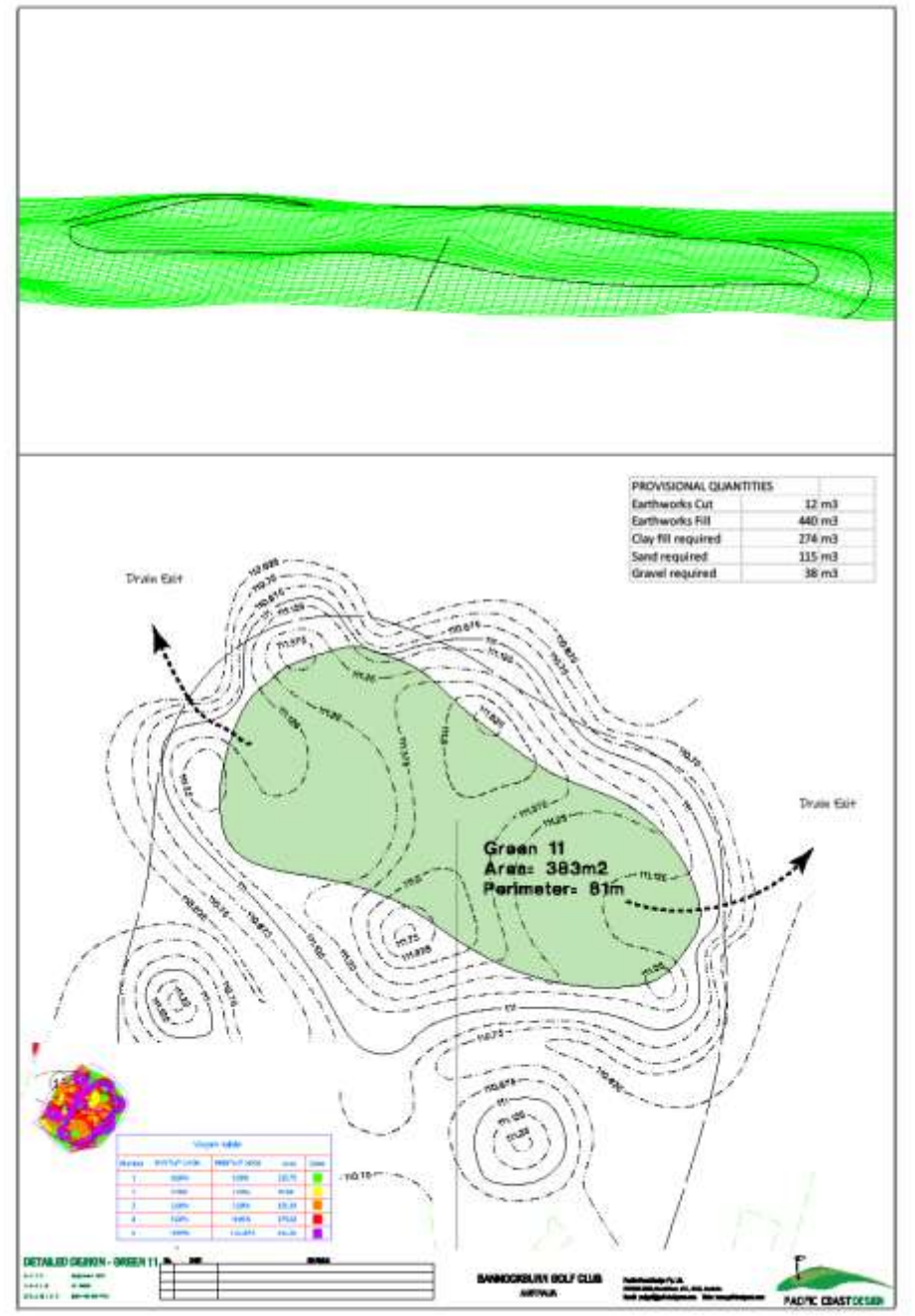




# Hole Descriptions



Conceptual work



# Specifications

- ▶ Greens
  - ▶ Sand based (modified USGA)
    - ▶ Gravel drainage layer
    - ▶ Sand surface (300mm deep)
  - ▶ Automatic irrigation
  - ▶ Drained (flat pipe)
  - ▶ Positive surface drainage
  - ▶ Couch grass surface (Winter Green)
    - ▶ sprigged

